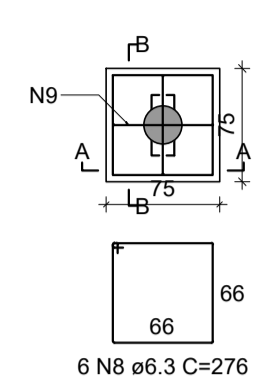
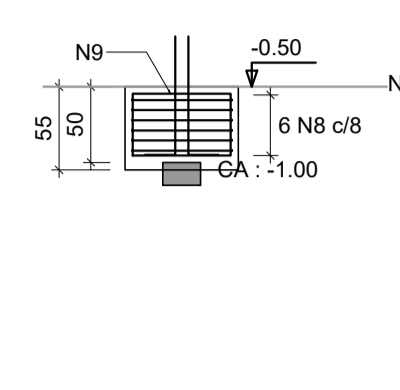


PROJETO ESTRUTURAL - CONCRETO ARMADO
ESCALA INDICADA

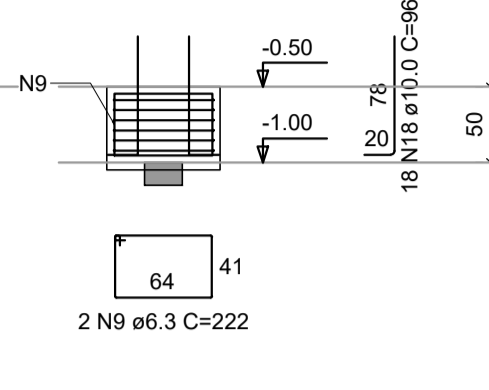
B13
1xHE25
PLANTA
Escala 1:50



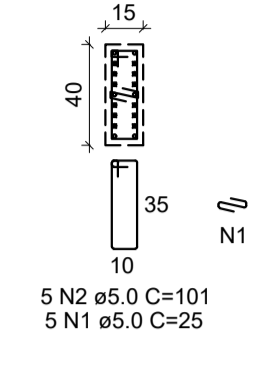
CORTE A-A
Escala 1:50



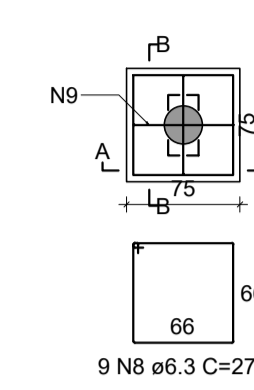
CORTE B-B
Escala 1:50



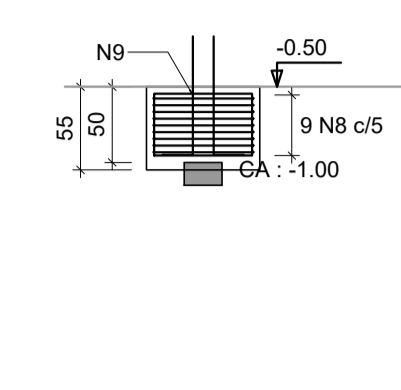
DETALHE DO PILAR
Escala 1:30



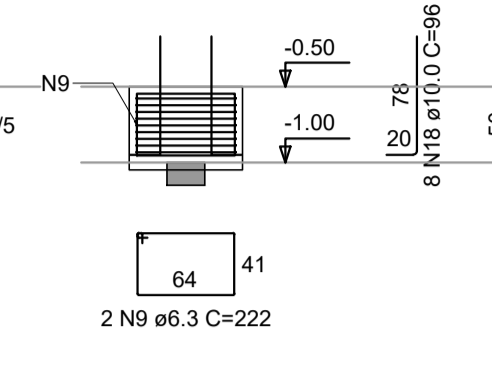
B14
1xHE25
PLANTA
Escala 1:50



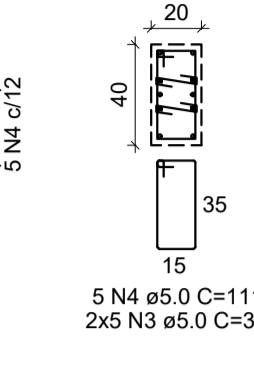
CORTE A-A
Escala 1:50



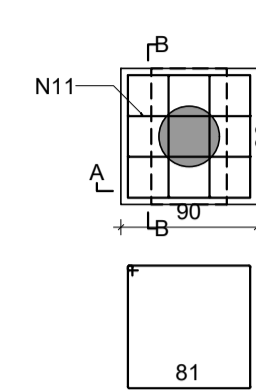
CORTE B-B
Escala 1:50



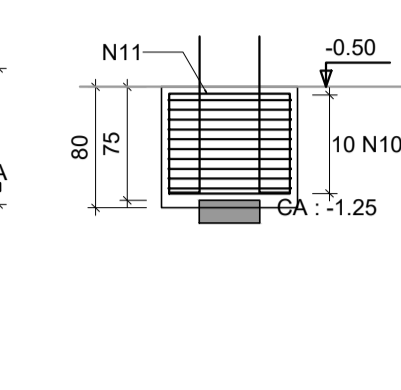
DETALHE DO PILAR
Escala 1:30



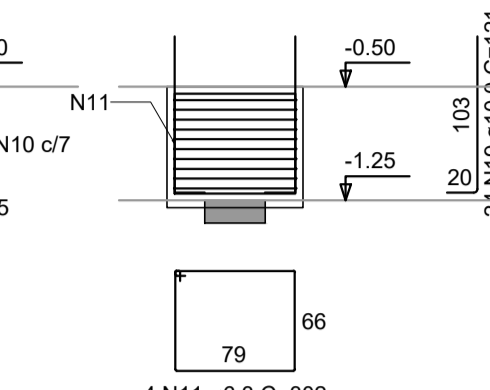
B15
1xHE40
PLANTA
Escala 1:50



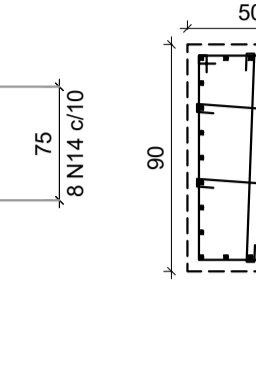
CORTE A-A
Escala 1:50



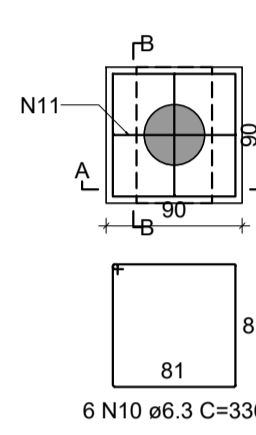
CORTE B-B
Escala 1:50



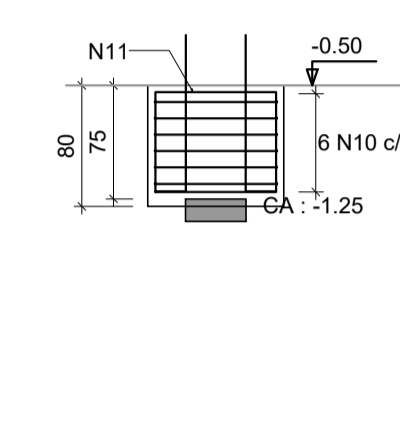
DETALHE DO PILAR
Escala 1:30



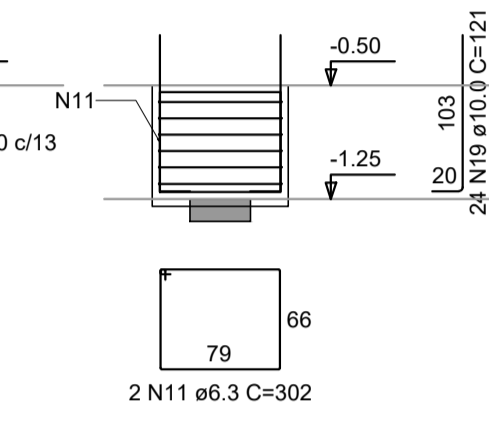
B17
1xHE40
PLANTA
Escala 1:50



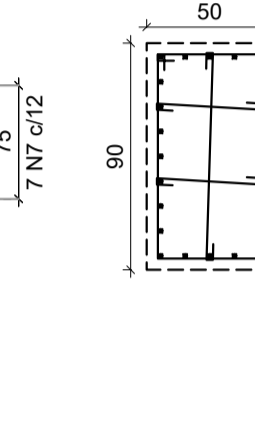
CORTE A-A
Escala 1:50



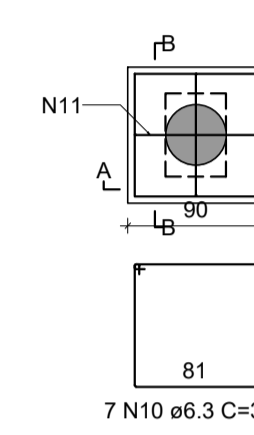
CORTE B-B
Escala 1:50



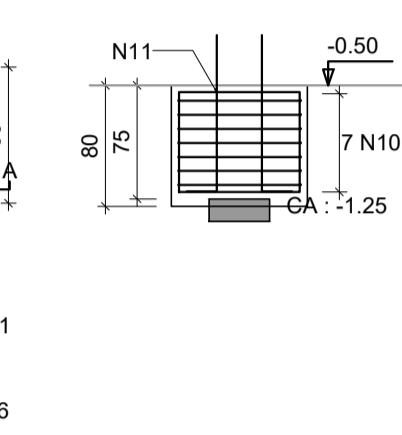
DETALHE DO PILAR
Escala 1:30



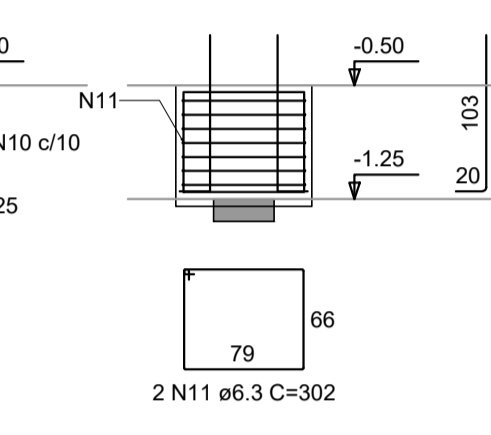
B18
1xHE40
PLANTA
Escala 1:50



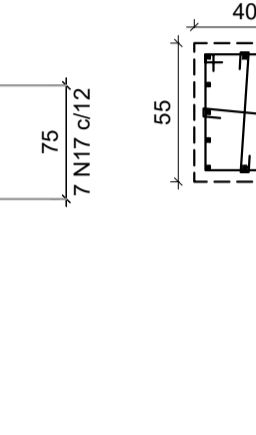
CORTE A-A
Escala 1:50



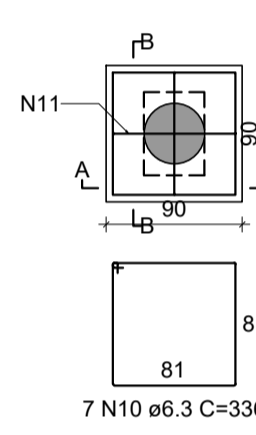
CORTE B-B
Escala 1:50



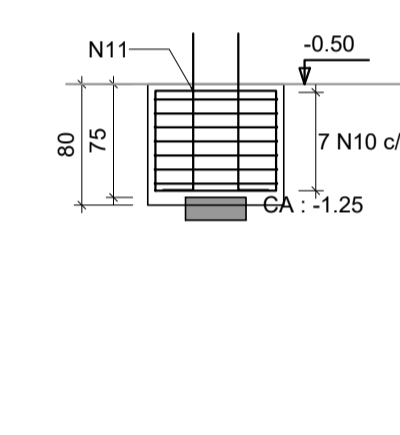
DETALHE DO PILAR
Escala 1:30



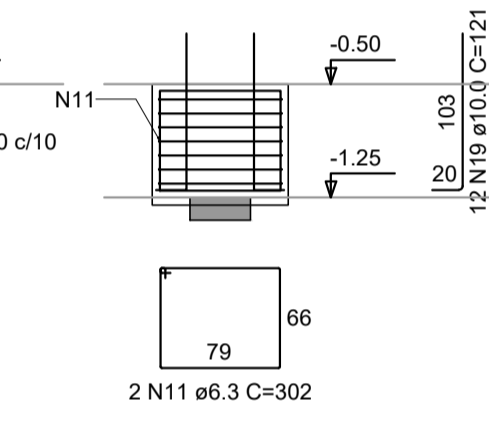
B20
1xHE40
PLANTA
Escala 1:50



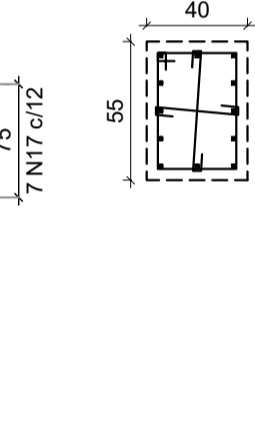
CORTE A-A
Escala 1:50



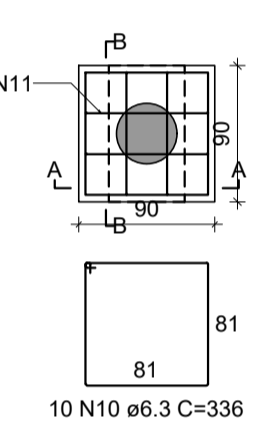
CORTE B-B
Escala 1:50



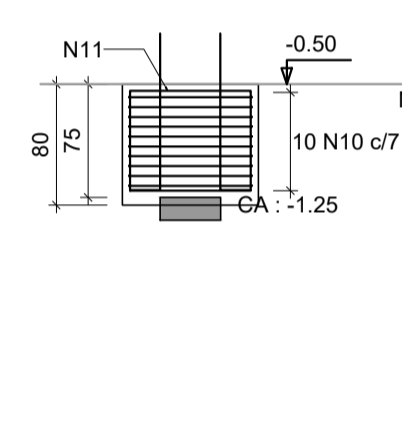
DETALHE DO PILAR
Escala 1:30



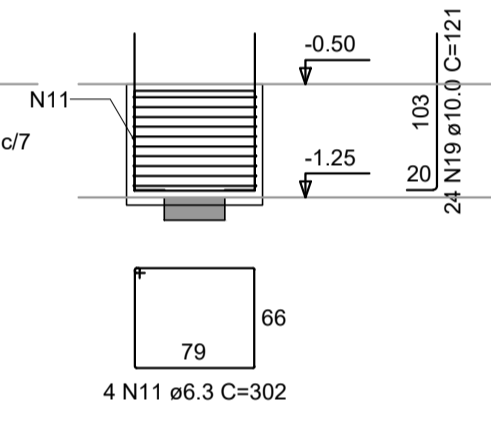
B22
1xHE40
PLANTA
Escala 1:50



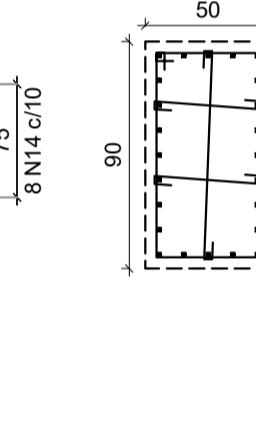
CORTE A-A
Escala 1:50



CORTE B-B
Escala 1:50



DETALHE DO PILAR
Escala 1:30



RELAÇÃO DO AÇO

ACO	N	DIAM (mm)	QUANT	C.UNIT (cm)	C.TOTAL (cm)
CA60	1	5.0	5	25	125
	2	5.0	5	101	505
	3	5.0	10	30	300
	4	5.0	5	111	555
	5	5.0	7	96	672
CA50	6	5.0	14	56	784
	7	5.0	7	255	1785
	8	6.3	15	276	4140
	9	6.3	4	222	888
	10	6.3	40	336	13440
	11	6.3	14	302	4228
	12	6.3	16	98	1568
	13	6.3	32	58	1856
	14	6.3	16	256	4096
	15	6.3	14	63	882
	16	6.3	14	48	672
	17	6.3	14	166	2324
	18	10.0	26	96	2496
	19	10.0	96	121	11616

RESUMO DO AÇO

ACO	DIAM (mm)	C.TOTAL (m)	QUANT + 10% (Barras)	PESO + 10% (kg)
CA50	6.3	340.9	32	91.8
CA60	10.0	141.1	13	95.7
CA60	5.0	47.3	5	8
PESO TOTAL (kg)				
CA50				187.5
CA60				8

Volume de concreto (C-30) = 3.82 m³
Área de forma = 17.70 m²

- NOTAS:**
1. COTAS EM CENTÍMETROS, E NÍVEIS EM METROS;
 2. CONFERIR MEDIDAS NO LOCAL;
 3. PARA EXECUÇÃO DO MURO CONSULTAR PROJETO ESPECÍFICO;
 4. OS DETALHES CONSTRUTIVOS ESTÃO APRESENTADOS NO MEMORIAL DESCRITIVO.

REV. 01	28/07/21	ALTERAÇÃO DE LOCAÇÃO	DAC
REV. 00	21/08/20	EMIÇÃO INICIAL	DAC
REVISÃO:	DATA:	DESCRIÇÃO:	RESP.:



DAC engenharia
Rua Miguel Vianna, nº 81, Sala 12
Bairro Morro Chic
CEP: 37500-080 - Itajubá / MG
Tel: (35) 3623-5720
www.dacengenharia.com.br

GERÊNCIA DE PROJETOS
DENIS DE SOUZA SILVA CREA: MG-127.216/D

COORDENAÇÃO DE PROJETOS
ALOISIO CAETANO FERREIRA CREA: MG-97.132/D

RESPONSÁVEL TÉCNICO
ENGR. CIVIL FLÁVIA C. BARBOSA CREA: MG-187.842/D

PROJETO
ENGR. CIVIL WILLIAM BARADEL LARI

DESENHO
ENGR. CIVIL WILLIAM BARADEL LARI

CONSTRUÇÃO DE HANGARES NO AEROPORTO DE POUSO ALEGRE

ENDEREÇO AVENIDA JOÃO BATISTA PIFFER, B. JARDIM AEROPORTO POUSO ALEGRE - MINAS GERAIS	DISCIPLINA ESTRUTURAL
ASSUNTO HANGAR 25X25METROS DETALHAMENTO DAS ARMADURAS BLOCOS DE COROAMENTO E PILARES DE ARRANQUE	FASE DO PROJETO EXECUTIVO
DATA INICIAL 21/08/2020	FOLHA Nº. 04/10
ESCALA INDICADA	ARQUIVO DAC-PMPA-HAN1-PE-EST-R01.DWG